

H-BEAM



ANTONIO CITTERIO /
OLIVER LOW

Direct/indirect suspended non-modular fluorescent, integral control gear, low glare optic

BODY REFLECTOR Aluminium or diffusing opal glass
Indirect: super pure aluminium, polycarbonate cover
Direct: Dark-light aluminium optic, or diffusing opal glass
FIXING Aluminium rod or steel wire



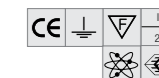
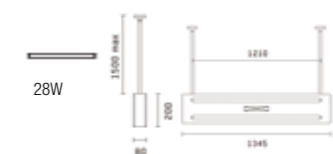
F0620009 White
.F0620020 GREY

Rod suspended integral electronic control gear

H-Beam Rod S1
ROD SUSPENDED DIRECT/INDIRECT LINEAR FLUORESCENT

Polycarbonate indirect lens , and dark light direct louvre

2x 28W T5 Linear Fluorescent



53%



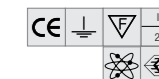
F0621009 White
.F0621020 GREY

Rod suspended integral electronic control gear

H-Beam Rod S1
ROD SUSPENDED INDIRECT LINEAR FLUORESCENT

Polycarbonate indirect lens , and diffusing opal glass direct lens

2x 28W T5 Linear Fluorescent



54%



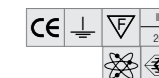
F0826009 White
.F0826020 GREY

Ceiling suspended, integral electronic control gear

H-Beam Wire S1
WIRE SUSPENDED DIRECT/INDIRECT LINEAR FLUORESCENT

Polycarbonate indirect lens , and dark light direct louvre

2x 28W T5 Linear Fluorescent.



54%

H-BEAM



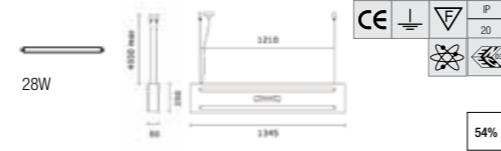
F0828009 White
.F0828020 GREY

Wire suspended, integral electronic control gear

H-Beam Wire S1
WIRE SUSPENDED DIRECT/INDIRECT
LINEAR FLUORESCENT

Polycarbonate indirect lens, and diffusing opal glass direct lens

2x 28W T5 Linear Fluorescent



Lamp and Reflector Options:

Fluorescent:
G5 T5 FH (2x28w)
G5 T5 FH (2x35w)
G5 T5 FH/FQ (2x28w + 4x24w)
G5 T5 FH/FQ (2x35w + 2x24w + 2x39w)

